

Modern Retro

Finished size 70" x 70" (1.8m x 1.8m)

Designed by Lynne Goldsworthy of lilysquilts.blogspot.com
using the Modern Retro collection from Makower UK www.makoweruk.com



Quilt A



Quilt B

makower uk

Unit 14, Cordwallis Business Park, Clivemont Road,
Maidenhead, Berkshire SL6 7BU +44(0)1628 509640
sales@makoweruk.com www.makoweruk.com

 **andover**

Modern Retro

Finished size 70" x 70" (1.8m x 1.8m)

Designed by Lynne Goldsworthy of lilysquilts.blogspot.com
using the Modern Retro collection from Makower UK www.makoweruk.com

All seams are pieced in this quilt but the leaf shapes can be applique if preferred.

In that case, use the solid line on the leaf shape as the applique line guide.

Fabric Requirements

Fabric	Quilt A	Quilt B	Amount	Cut
Background	1525 B7 Linea Tonal	2000 W01 Spectrum	3 ¾ m / 4 yards	Twenty-five 5 ½" WOF strips cut into one hundred 5 ½" x 6" rectangles (or one hundred 5 ½" squares if you prefer to applique the leaf shapes) and forty-eight 5 ½" x 7 ¼" rectangles
Fabric A	1846 G* Leaf	1846 T Leaf	1m / 1yd	Ten 3 ½" WOF strips cut into forty-eight 3 ½" x 8" rectangles
Fabric B	1841 B* Foliage	1845 B Scatter	1m / 1 ¼ yd	Eleven 3 ½" WOF strips cut into fifty-two 3 ½" x 8" rectangles
Fabric C	1525 P4 Linea Tonal	1846 N Leaf	35cm / 15"	Three 4 ½" WOF strips cut into twelve 4 ½" x 8" rectangles.
Fabric D	1845 Q Scatter	1843 T Flowers	25cm / 9"	Two 4 ½" WOF strips cut into eight 4 ½" x 8" rectangles.
Fabric E	1846 G* Leaf	1846 G Leaf	15cm / 5"	One 4 ½" WOF strip cut into four 4 ½" x 8" rectangles.
Fabric F	1525 Y Linea Tonal	1525 Y Linea Tonal	15cm / 5"	One 4 ½" WOF strip cut into four 4 ½" x 8" rectangles.
Fabric G	1525 B2 Linea Tonal	1525 B4 Linea Tonal	25cm / 9"	Two 4 ½" WOF strips cut into eight 4 ½" x 8" rectangles.
Fabric H	1843 B Flowers	1841 T* Foliage	25cm / 9"	Two 4 ½" WOF strips cut into eight 4 ½" x 8" rectangles.
Fabric I	1844 Q* Ditzy Floral	1947 T Stripe	15cm / 5"	One 4 ½" WOF strip cut into four 4 ½" x 8" rectangles.
Binding	1844 Q* Ditzy Floral	1844 B5 Ditzy Floral	½ m / ½ yd	Seven 2 ½" WOF strips
Backing	1841 B* Foliage	1841 T* Foliage	4 m / 4 ½ yds	Two equal lengths
Wadding	2 m x 2 m / 78" x 78" 279 Cotton Mix 80-20 from http://www.vlieseline.com/en/			
Threads	Aurifil 50wt for piecing and 40wt for quilting from http://www.aurifil.com			
Templates	One of each of templates A, B, C and D			

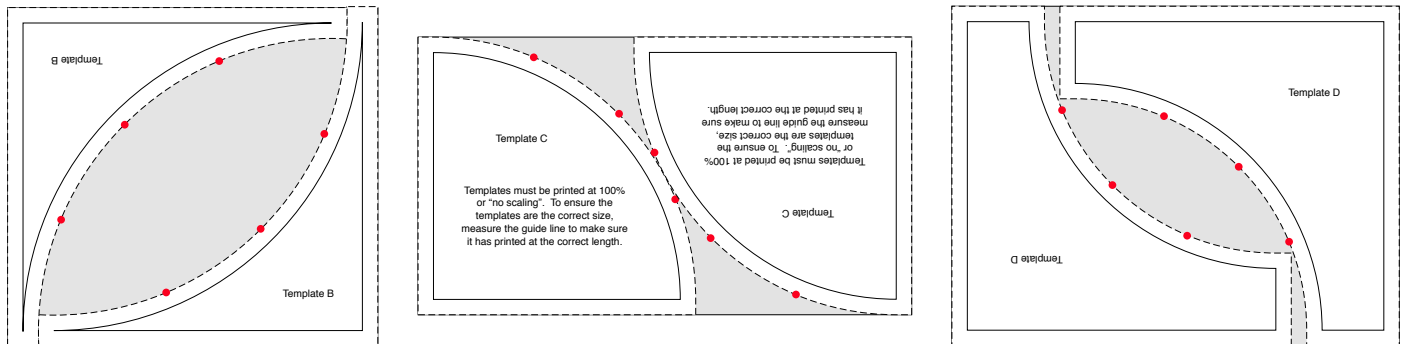
* Indicates prints which appear twice in the table

Notes:

- Read the pattern in full before starting.
- ¼" seams are used throughout except where stated otherwise.
- Press after each seam, pressing seams open or to one side as preferred.
- WOF = width of fabric – a strip of fabric cut from selvedge to selvedge.
- Make sure to visit <http://www.makoweruk.com/projects/> to ensure you are working from the most up-to-date version of the pattern.

Cutting the fabrics

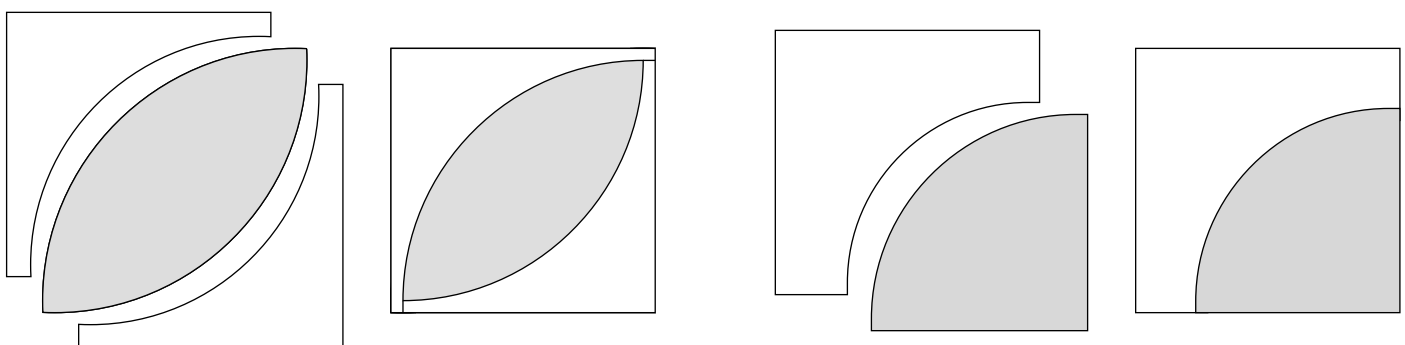
1. Cut the fabrics as shown in the fabric requirements table.
2. Cut each of the print 3 ½" x 8" rectangles into one template A shape marking the red dots with small snips into the seam allowance or with an erasable marker.
3. Cut each of the background fabric 5 ½" x 6" rectangles into two B template shapes again marking the red dots and rotating the templates as shown in the diagrams below.



4. Cut each of the print 4 ½" x 8" rectangles into two C template shapes again marking the red dots and rotating the templates.
5. Cut each of the background fabric 5 ½" x 7 ¼" rectangles into two D template shapes again marking the red dots and rotating the templates.

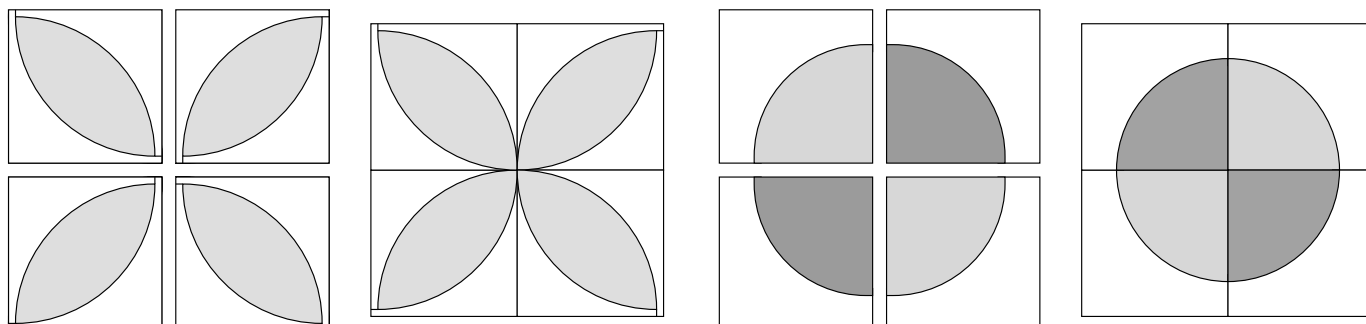
Making the quilt top

1. Pin then sew one B template piece to one side of one A template piece taking care to pin at each end and at each joining dot.
2. Sew a second B template piece to the other side of this piece to complete the leaf block. See diagrams below.
3. Press seams towards the leaf shape in half of the blocks and away in the other half. In each finished leaf block, the seams should be pressed towards the leaf in the top left and bottom right sections and away from the leaf in the top right and bottom left so that the seams will nest and to help reduce bulk in the seams.
4. Pin then sew one D template piece to one C template piece taking care to pin at each end and at each joining dot. Press seams towards the quarter circle for the darker quarters in each finished circle and towards the background for the lighter quarters in each circle. Again see diagrams below.

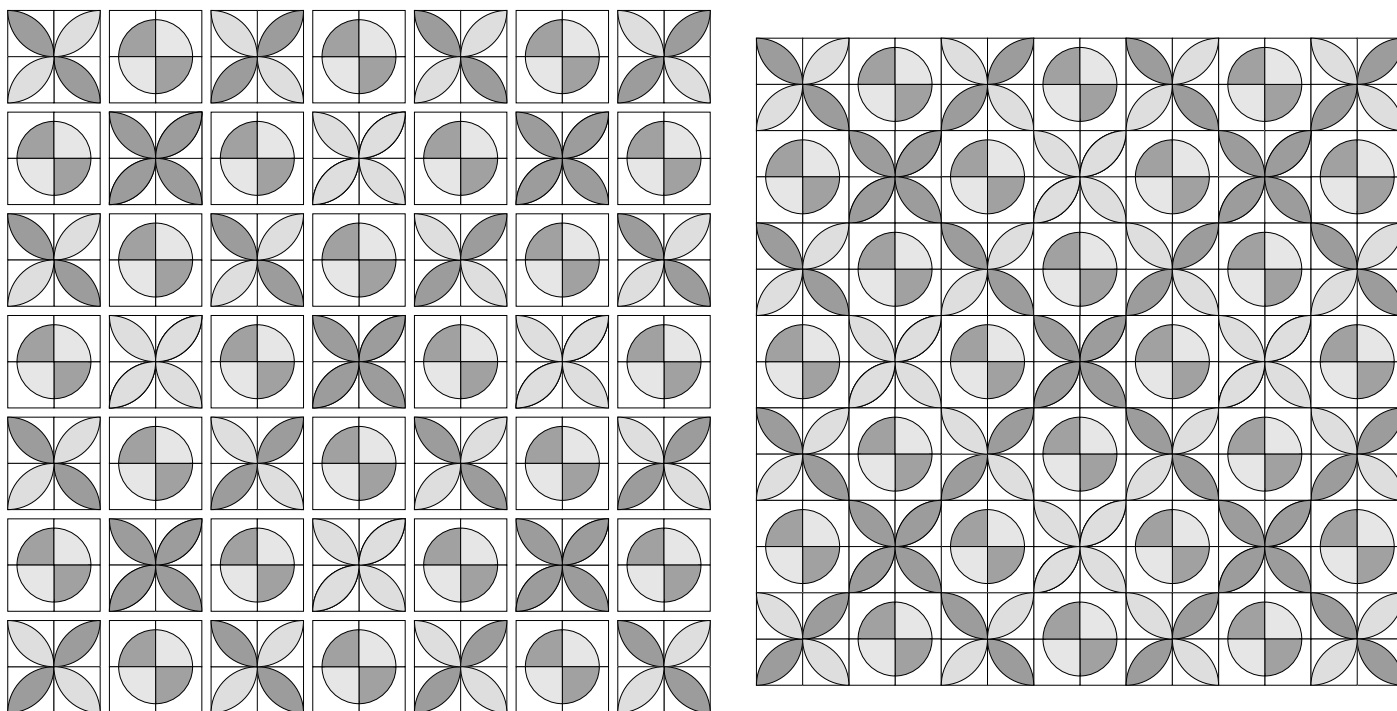


Tips for sewing curved seams

- Place the pins perpendicular to the seam with the heads pointing out to the right.
 - Sew with the background piece on top.
 - If you find that the piece on top seems too big, slightly shrink the size of your seam allowance. If the piece on top seems too small, slightly increase your seam allowance.
 - Sew slowly and carefully continually aligning the edges of the two fabrics and stopping at each marked point with the needle in the down position to re-adjust the fabric edges.
5. Sew the leaf shapes and the quarter circles into sets of four to make the forty-nine finished blocks following the fabric layout in the main quilt image.

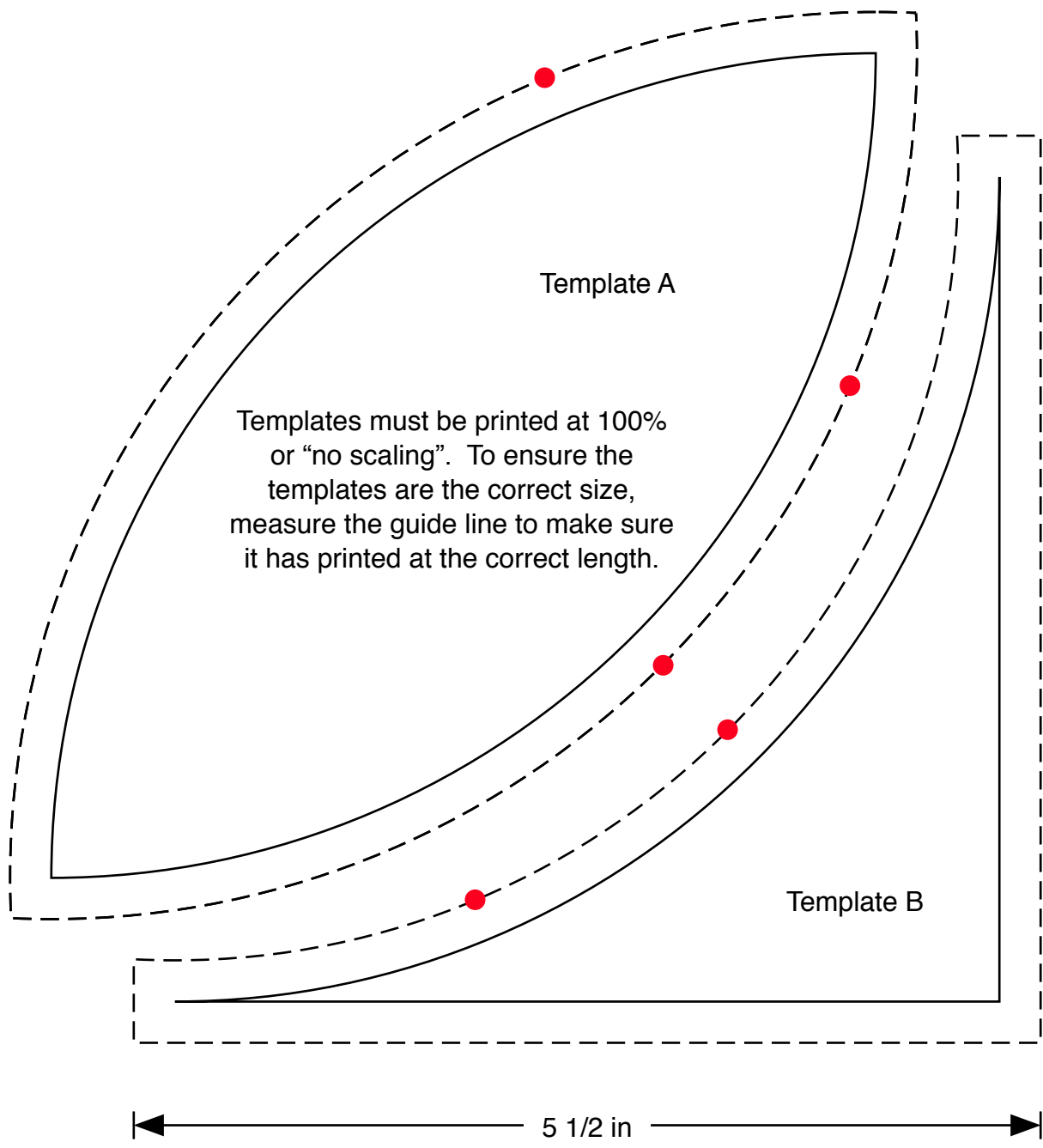


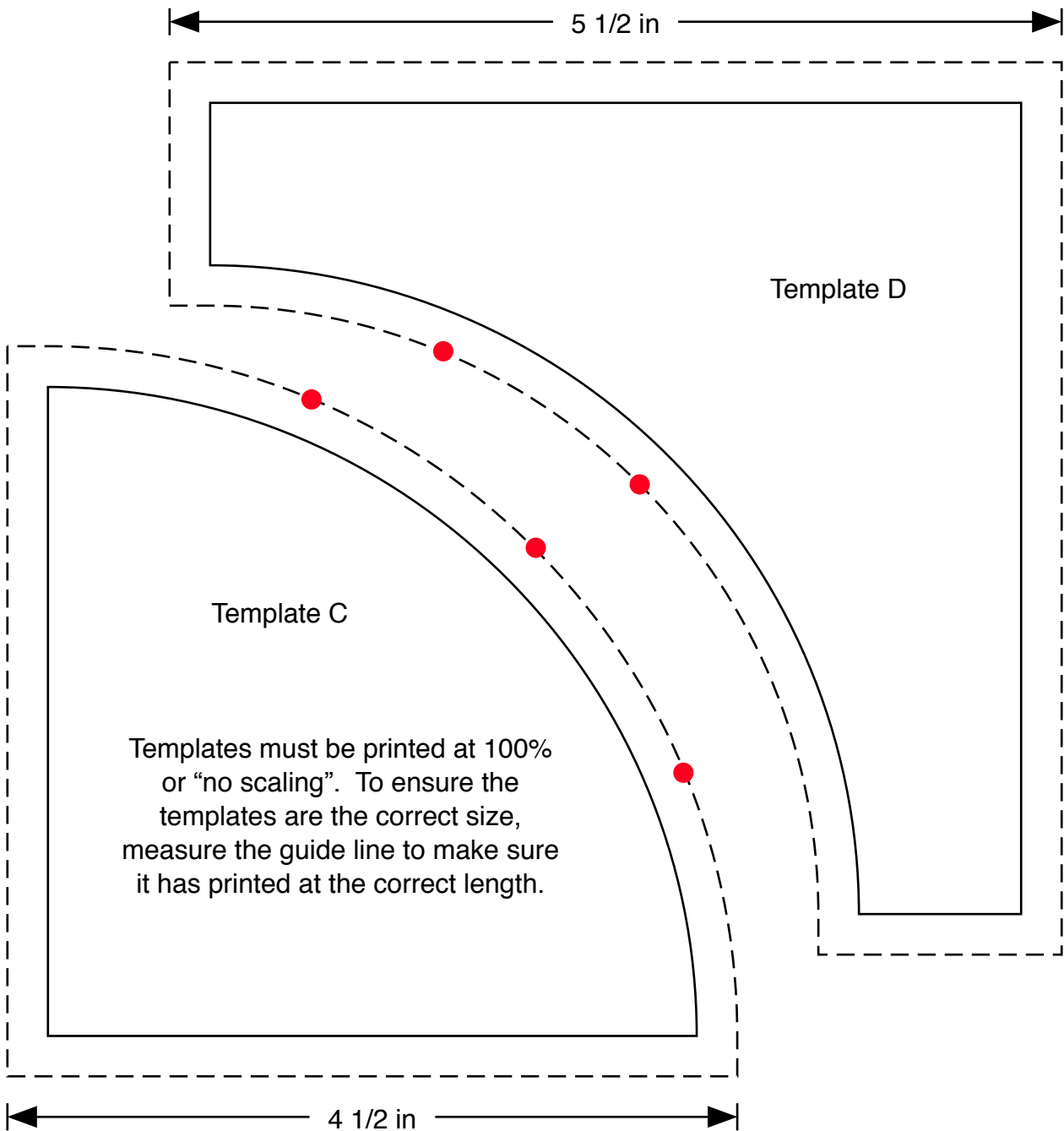
6. Sew the blocks into seven rows of seven, alternating leaf and circle blocks as shown in the main quilt image and in the diagram below.
7. Sew the seven rows together to finish the quilt top.



Finishing the quilt

1. Sew the two pieces of backing fabric together along the long sides using a $\frac{1}{2}$ " seam. Press that seam open.
2. Sew the binding strips end to end using diagonal or straight seams as preferred and press wrong sides together along the length to make a double fold binding.
3. Make a quilt sandwich, basting together the quilt back, the wadding and the quilt top.
4. Quilt as desired then trim the quilt square, removing excess wadding and backing. We quilted a diagonal cross-hatch of lines approximately $1\frac{3}{4}$ " apart using a cream Aurifil 40wt thread.
5. Bind the quilt taking care to mitre the corners.







1841/T Foliage



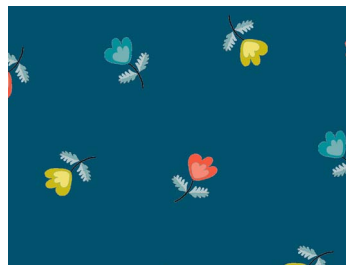
1844/B5 Ditzzy Floral



1846/T Leaf



1843/T Flowers



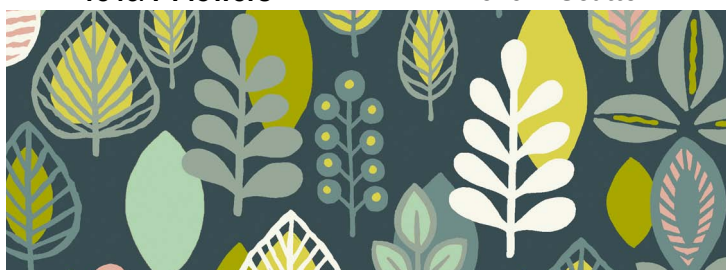
1845/B Scatter



1846/N Leaf



1847/T Stripe



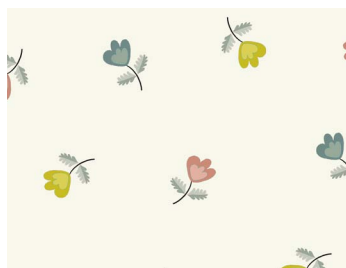
1841/B Foliage



1846/G Leaf



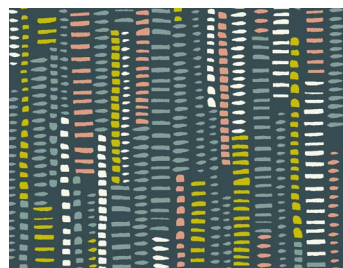
1844/Q Ditzzy Floral



1845/Q Scatter



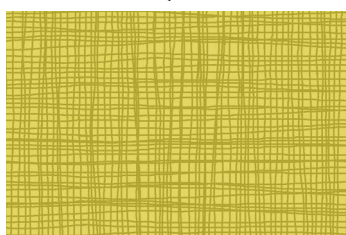
1843/B Flowers



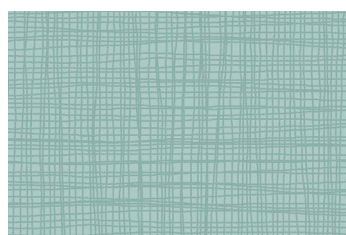
1847/B Stripe



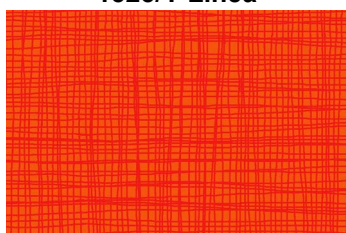
1846/B5 Leaf



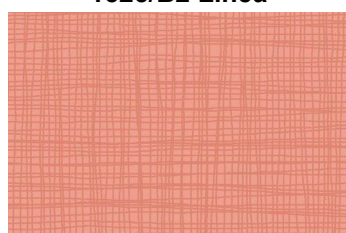
1525/Y Linea



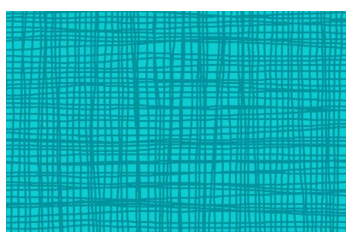
1525/B2 Linea



1525/N Linea



1525/P4 Linea



1525/B4 Linea



1525/B7 Linea



Modern Retro finished size 70" x 70" (1.8m x 1.8m)
Designed by Lynne Goldsworthy of lilyquilts.blogspot.com
Download free instructions from www.makoweruk.com